

H. ALIGNMENT PROCEDURE FOR A TYPICAL DUAL IF SYSTEM USING STAGGER TUNED IF'S.

Important: Always follow the recommended procedure outlined by the manufacturer of the set you are servicing. This is exceedingly important, because of the wide variety of circuits being used today in Television. If you haven't got the manufacturer's service notes, then use some such standard service as Howard Sam's. The following instructions are given as general information only. To properly align a Television set, it is vital that you follow the set manufacturer's recommendations.

1. Usual order of Alignment.
 - a. Video & Sound IF Traps.
 - b. Video IF Transformers
 - c. Sound Discriminator
 - d. Sound IF Transformers
 - e. RF Section of front end
 - f. Oscillator section of front end.

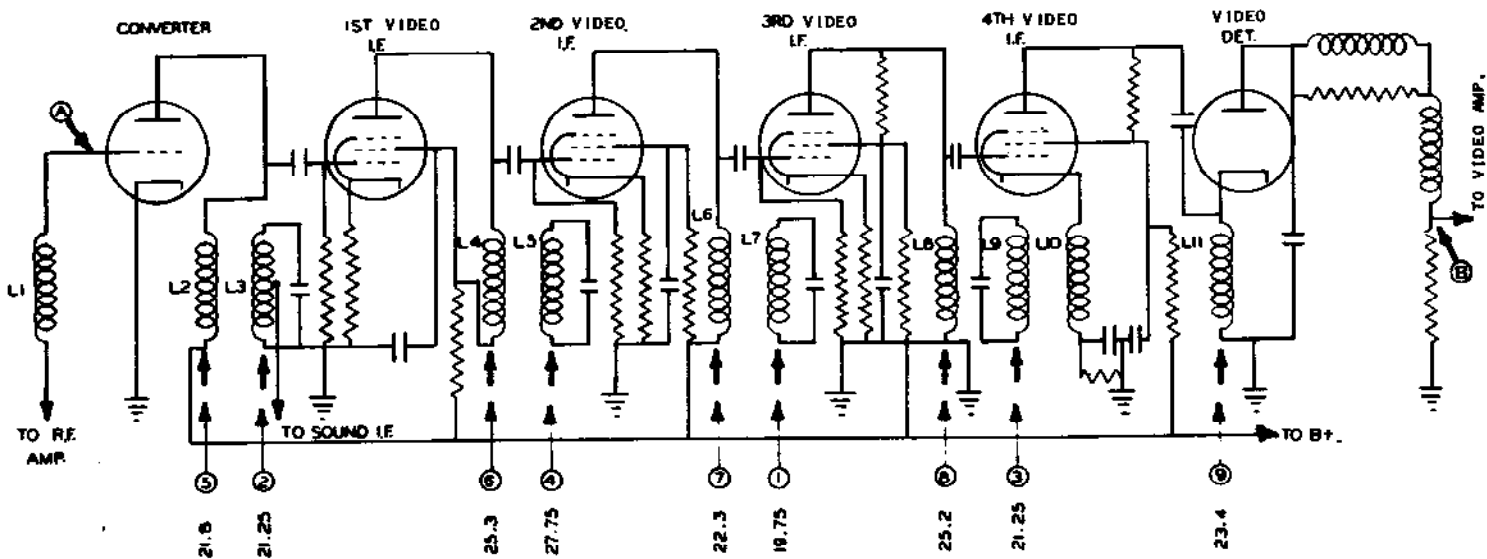


Fig. 8. Typical Stagger Tuned Video I.F. System

2. Alignment of Video & Sound IF Traps.
 - a. Connect the CRO Horizontal Input Jack of the TVG-2 to the oscilloscope Horizontal Input Terminals. Be sure the oscilloscope Horizontal Input control is set to "External #1" so that the 60 cycle sweep from the TVG-2 is used as the Horizontal sweep voltage.